

Switchgear type RKS5-2K/2 for rated voltage 500V



Switchgear type RKS5-2K/2 is an electrical device designed for use in the underground mining pits in non-explosive conditions and on the ground.

Switchgear type RKS5-2K/2 is designed for connecting and switching on receivers (especially fans) in the 3-phase mine grid with insulated star point on the transformer (system IT) of rated grid voltage of 500V.

TECHNICAL DATA:

ingress protection
supply rated voltage
number of 500V outlets
outlet rated current
weight
dimensions

IP54
500VAC, 50Hz
2
acc. to Table 1
35 kg
800 x 600 x 370 (height x width x depth)

Table 1

Switchgear type	Maximum outlet rated current [A]		Rated current of clamps from the supply side (Inz) [A]
	Outlets		
	I	II	
RKS5-2K/2	115	50	160

CONSTRUCTION

The switchgear housing is made of steel sheets. The whole unit is based by a common support frame. The housing is equipped with brackets that allow for the switchgear to be hung on a chain or to be placed directly on the ground.

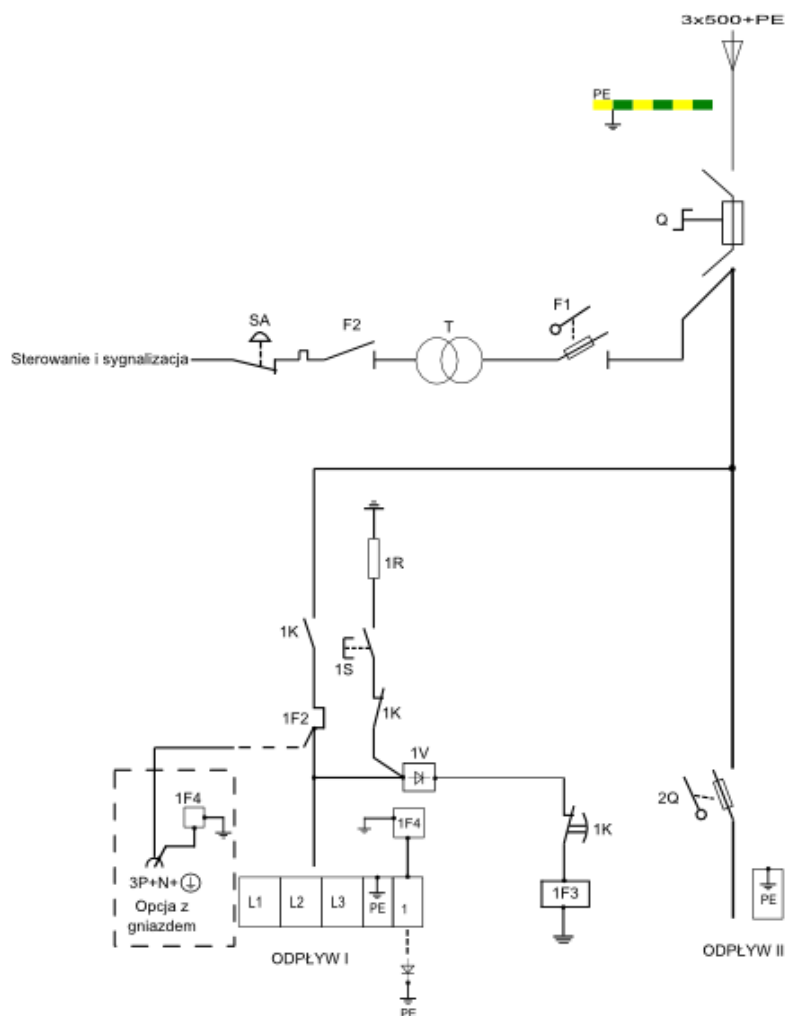
MODE OF OPERATION

The control of 500 V outlets is carried out with the buttons situated on the face of the switchgear. The switchgear is equipped with power protections against short-circuiting, overloading, low insulation resistance and an increasing in earth resistance. The turning-off of the outlets are carried out with control buttons situated on the face of the switchgear or with the emergency off-button.

SCHEMATIC DIAGRAM

Legend:

Odptyw - outlet
 Opcja z gniazdem - optional socket
 Sterowanie i sygnalizacja - control and signalling
 Q - fuse disconnecter
 1K - contactor
 1F2 - overload protection
 1F3 - low insulation resistance protection



Orders should be submitted in writing or by fax to the address:

 **Instal-Service PL**

Spółka z ograniczoną odpowiedzialnością
 Spółka komandytowa

58-506 Jelenia Góra, ul. Wrocławska 15a
 tel. (+48 075) 64-57-950
 fax. (+48 075) 64-57-951
 e-mail: instal@instal-service.pl